
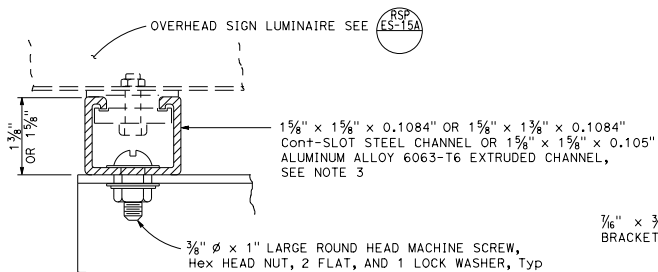
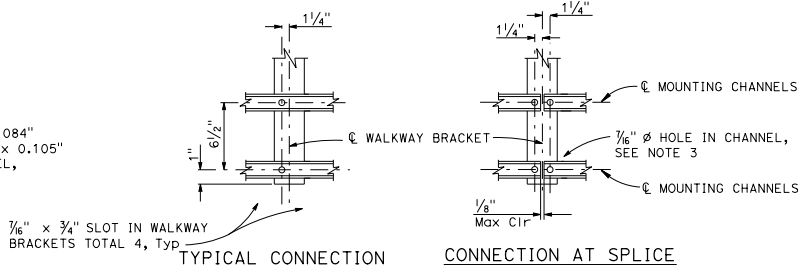


DIST	COUNTY	ROUTE	POST MILES TOTAL PROJECT	SHEET No.	TOTAL SHEETS

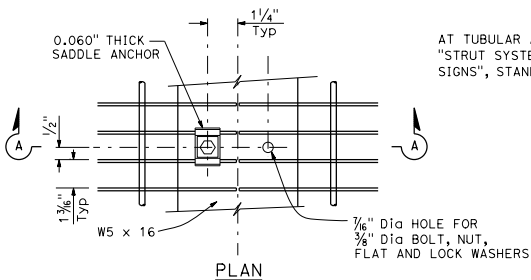

  
 October 19, 2018  
 PLANS APPROVAL DATE  
 THE STATE OF CALIFORNIA OR ITS OFFICERS OR AGENTS SHALL NOT BE RESPONSIBLE FOR THE ACCURACY OR COMPLETENESS OF SCANNED COPIES OF THIS PLAN SHEET.



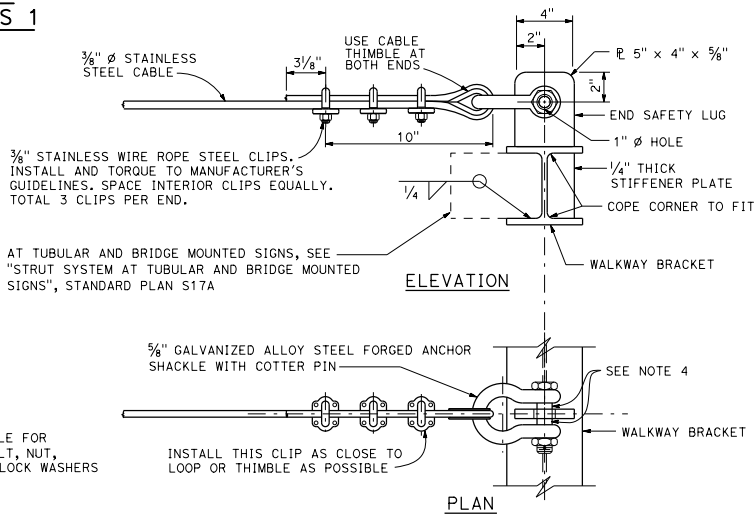
**OVERHEAD SIGN LUMINAIRE MOUNTING CHANNEL DETAILS 1**



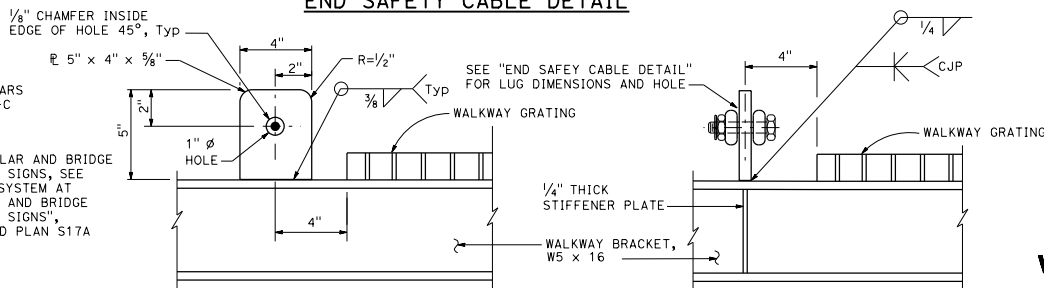
**OVERHEAD SIGN LUMINAIRE MOUNTING CHANNEL DETAILS 2**



**WALKWAY GRATING DETAILS**  
Shown at splice



**END SAFETY CABLE DETAIL**



**INTERIOR SAFETY LUG DETAIL**  
(At every walkway bracket between exterior walkway brackets)

**END SAFETY LUG DETAIL**  
(At exterior walkway brackets)

**NOTES:**

1. Welded type grating shall have 1/4" x 1/8" bearing bars at 1 1/2" centers with 1/4" diameter (or equal) cross bars at 4" centers. If mechanical lock grating is used, it shall be equal in strength to the welded type. Alternate hold-down clips may be submitted for approval.
2. Walkway grating and overhead sign luminaire mounting channels to be continuous (no splices) over as many walkway brackets as practical and consistent with fabrication, ease of handling and assembly.
3. Contractor may substitute 1 5/8" x 1 5/8" x .1084" cont-slot steel channel with pre-punched slots not larger than 1/2" x 3". Slots shall be at bottom of channel and shall be parallel to channel. Slots shall be spaced not closer than 4" center to center.
4. Place an equal amount of washers on each side to align cable with end lug without restricting shackle bolt rotation or contacting cable.

STATE OF CALIFORNIA  
DEPARTMENT OF TRANSPORTATION  
**OVERHEAD SIGNS  
WALKWAY DETAILS No. 2**

NO SCALE

RSP S17 DATED OCTOBER 19, 2018 SUPERSEDES STANDARD PLAN S17  
DATED MAY 31, 2018 - PAGE 423 OF THE STANDARD PLANS BOOK DATED 2018.

**REVISED STANDARD PLAN RSP S17**

2018 REVISED STANDARD PLAN RSP S17