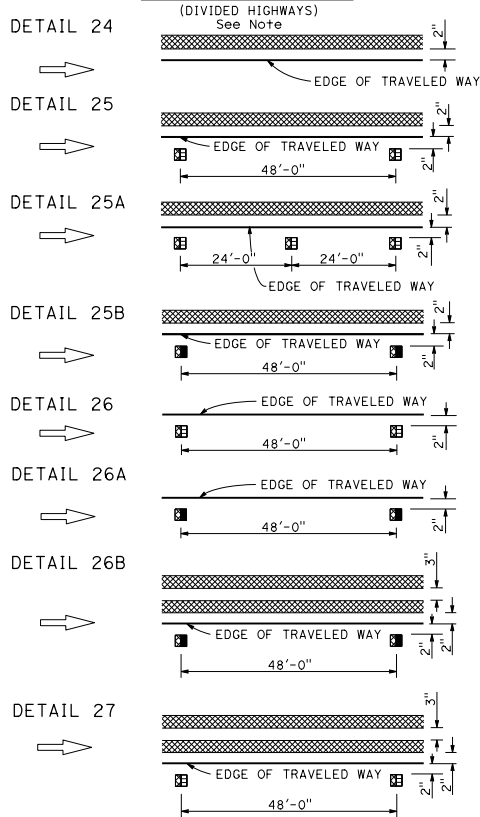
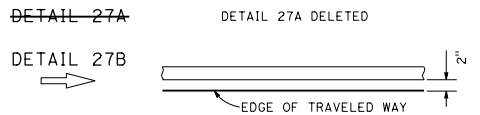


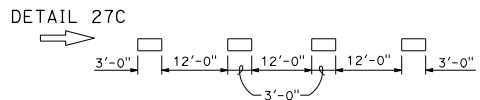
**LEFT EDGE LINES**



**RIGHT EDGE LINES**

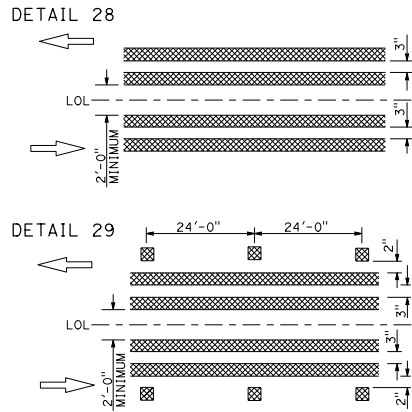


**RIGHT EDGE LINE EXTENSION THROUGH INTERSECTIONS**

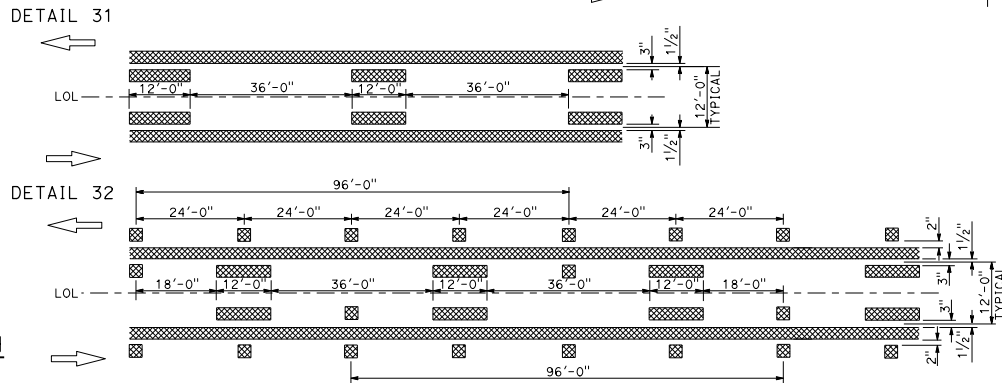


LEFT EDGE LINES NOTE:  
On freeways use traffic stripe details with Type RY markers.

**MEDIAN ISLANDS**



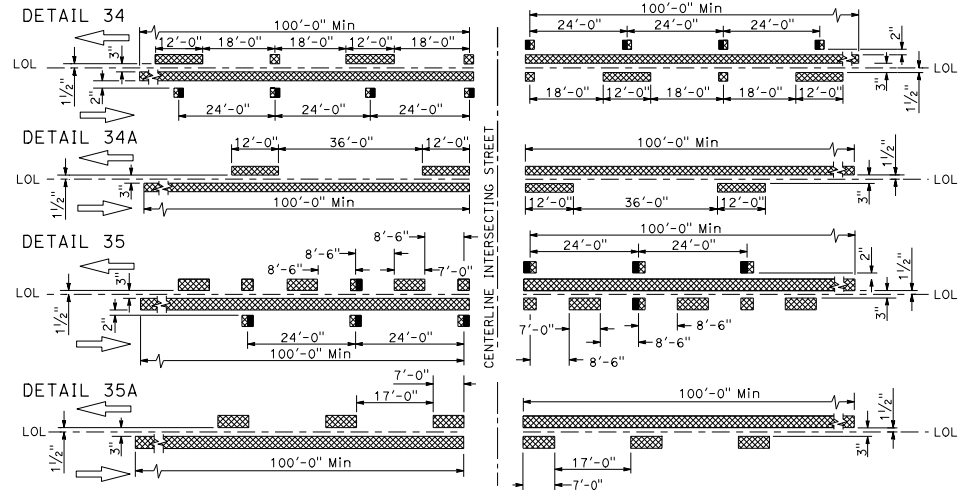
**TWO-WAY LEFT TURN LANES**



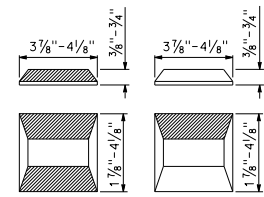
**LEGEND**

- MARKERS**
- TYPE D TWO-WAY YELLOW RETROREFLECTIVE
  - TYPE H ONE-WAY YELLOW RETROREFLECTIVE
  - TYPE RY RED-YELLOW RETROREFLECTIVE
- LINES**
- 6" WHITE
  - 6" YELLOW

**INTERSECTION TREATMENTS**



**MARKER DETAILS**



TYPE RY AND TYPE D  
TYPE H

RETROREFLECTIVE FACE

STATE OF CALIFORNIA  
DEPARTMENT OF TRANSPORTATION

**PAVEMENT MARKERS AND TRAFFIC LINES TYPICAL DETAILS**

NO SCALE

RSP A20B DATED APRIL 19, 2019 SUPERSEDES STANDARD PLAN A20B  
DATED MAY 31, 2018 - PAGE 13 OF THE STANDARD PLANS BOOK DATED 2018.

**REVISED STANDARD PLAN RSP A20B**

DIST	COUNTY	ROUTE	POST MILES TOTAL PROJECT	SHEET NO.	TOTAL SHEETS

Atifa Ferouz  
REGISTERED CIVIL ENGINEER  
No. C80402  
EXP. 3-31-21  
CIVIL

April 19, 2019  
PLANS APPROVAL DATE

THE STATE OF CALIFORNIA OR ITS OFFICERS OR AGENTS SHALL NOT BE RESPONSIBLE FOR THE ACCURACY OR COMPLETENESS OF SCANNED COPIES OF THIS PLAN SHEET.

2018 REVISED STANDARD PLAN RSP A20B