
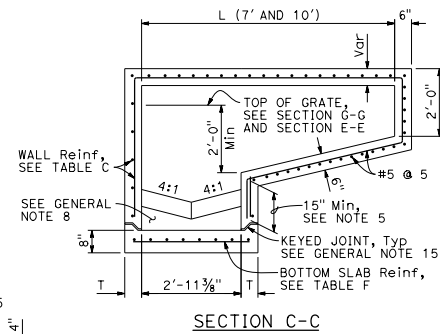
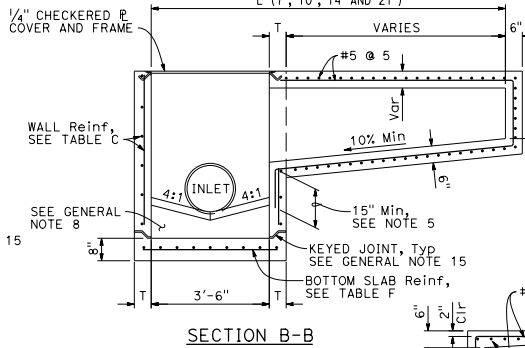
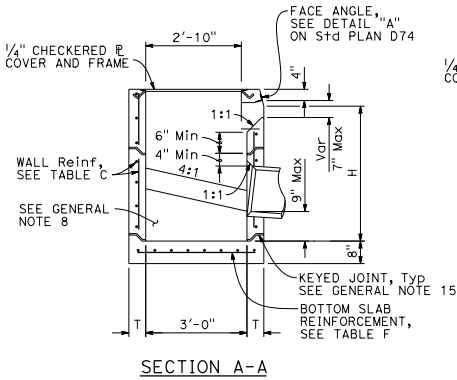
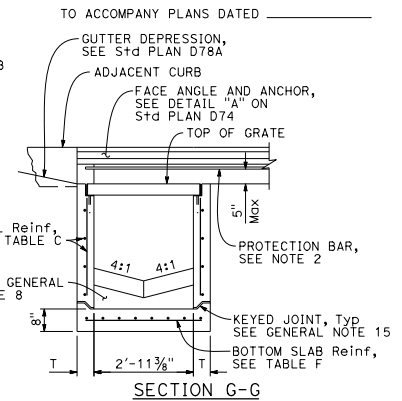
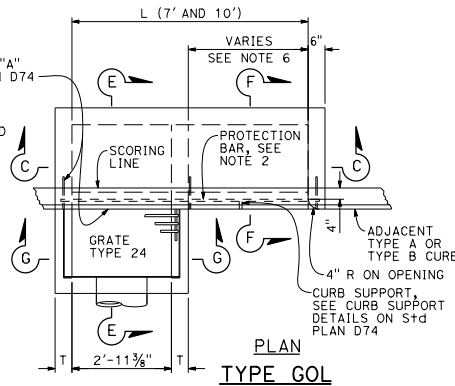
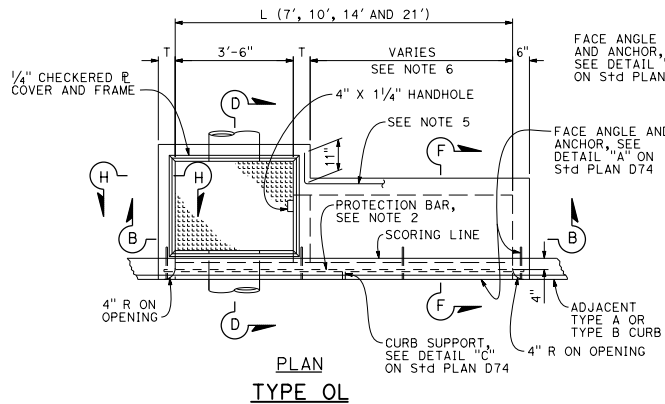
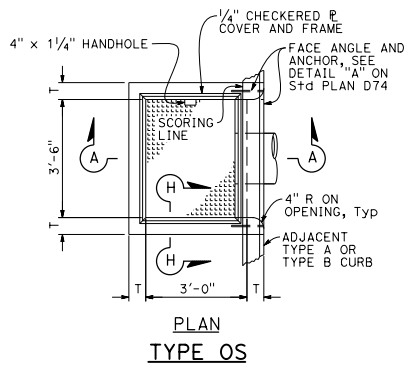


DIST	COUNTY	ROUTE	POST MILES TOTAL PROJECT	SHEET NO.	TOTAL SHEETS

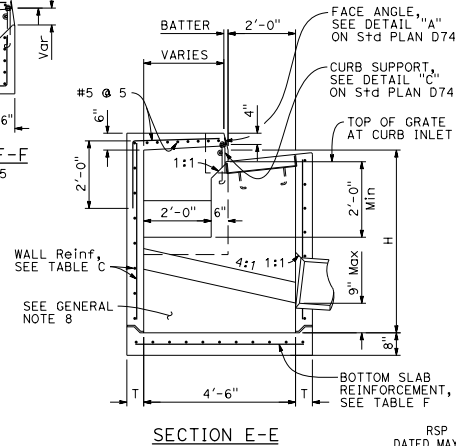
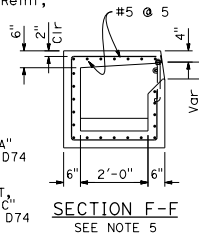
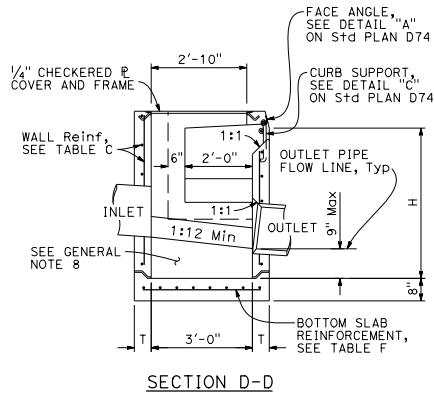
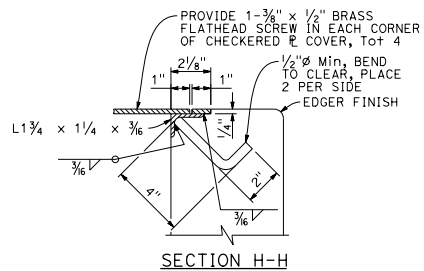
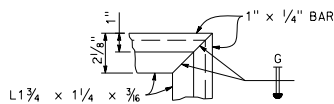

  
 REGISTERED CIVIL ENGINEER  
 Carl M. Dunn  
 No. C59976  
 Exp. 6-30-20  
 CIVIL  
 STATE OF CALIFORNIA

April 19, 2019  
 PLANS APPROVAL DATE  
 THE STATE OF CALIFORNIA OR ITS OFFICERS OR AGENTS SHALL NOT BE RESPONSIBLE FOR THE ACCURACY OR COMPLETENESS OF SCANNED COPIES OF THIS PLAN SHEET.



**NOTES:**

1. See Standard Plan D73F for General Notes and additional details. See Standard Plan D73G for tables, wall thickness "T" and quantities.
2. When shown on the project plans, place a 3/4" plain round protection bar horizontally across the length of the opening and bend back 4" into the inlet wall on each side.
3. Complete joint penetration butt welds may be substituted for the fillet welds on all anchors.
4. Standard square, hexagon, round or equivalent headed anchors may be substituted for the right angle hooks on the anchors shown on this plan.
5. Extend all horizontal bars from inlet extensions into adjacent concrete elements of main inlet box a minimum of 15". Where shown, bend horizontal bars into box. If necessary rotate bars to maintain 2" clear coverage.
6. Height of curb opening will vary with the type of curb and the depth of the local depression.



STATE OF CALIFORNIA  
 DEPARTMENT OF TRANSPORTATION  
**PRECAST DRAINAGE INLETS**  
**TYPES OS, OL AND GOL**  
 NO SCALE

RSP D73A DATED APRIL 19, 2019 SUPERSEDES STANDARD PLAN D73A  
 DATED MAY 31, 2018 - PAGE 202 OF THE STANDARD PLANS BOOK DATED 2018.

**REVISED STANDARD PLAN RSP D73A**

2018 REVISED STANDARD PLAN RSP D73A