
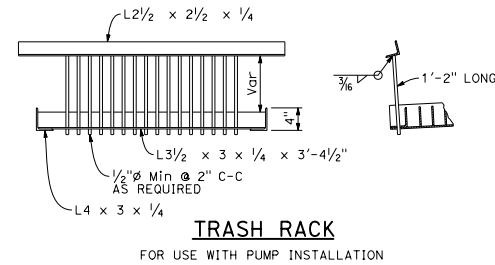
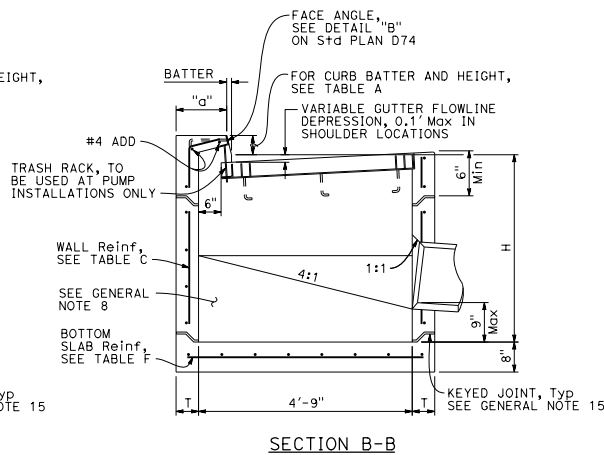
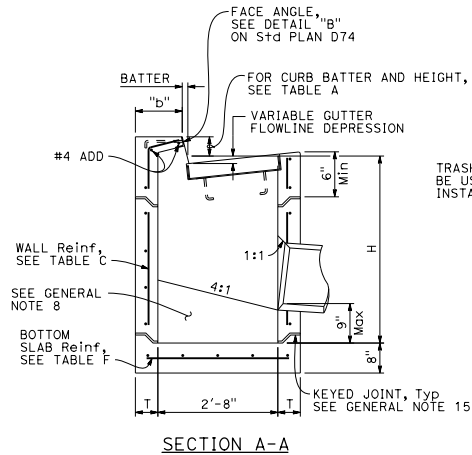
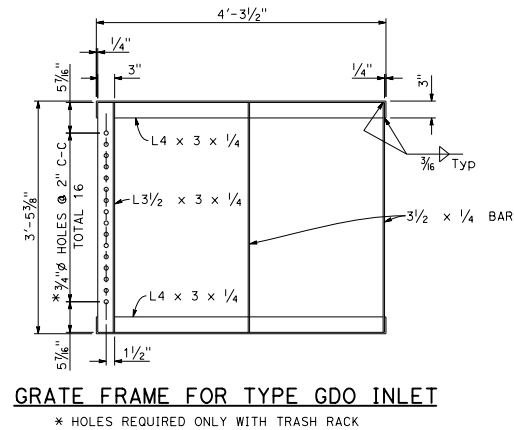
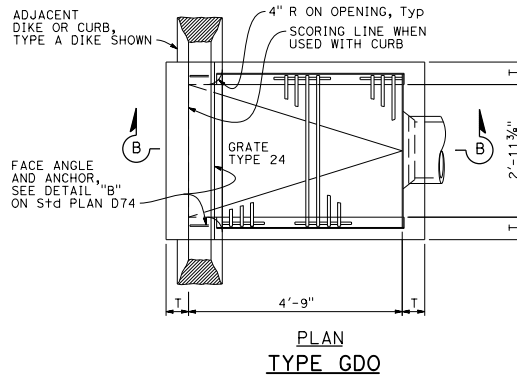
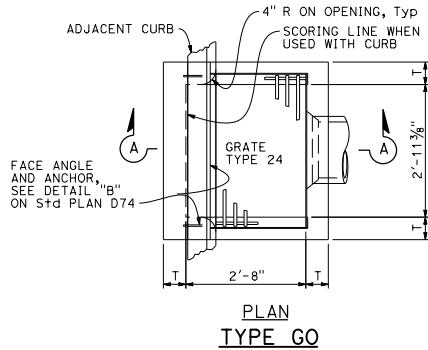


Dist#	COUNTY	ROUTE	POST MILES TOTAL PROJECT	SHEET No.	TOTAL SHEETS


  
 REGISTERED CIVIL ENGINEER  
 Carl M. Dunn  
 No. C59976  
 Exp. 6-30-20  
 CIVIL  
 STATE OF CALIFORNIA

April 19, 2019  
 PLANS APPROVAL DATE  
 THE STATE OF CALIFORNIA OR ITS OFFICERS  
 OR AGENTS SHALL NOT BE RESPONSIBLE FOR  
 THE ACCURACY OR COMPLETENESS OF SCANNED  
 COPIES OF THIS PLAN SHEET.

TO ACCOMPANY PLANS DATED \_\_\_\_\_



**NOTES:**

1. See Standard Plan D73F for General Notes and additional details. See Standard Plan D73G for tables, wall thickness "T" and quantities.
2. Where shown on the project plans, place a 3/4" plain round protection bar horizontally across the length of the opening and bend back 4" into the inlet wall on each side.
3. Complete joint penetration butt welds may be substituted for the fillet welds on all anchors.
4. Standard square, hexagon, round or equivalent headed anchors may be substituted for the right angle hooks on the anchors shown on this plan.

CURB TYPE	NORMAL CURB HEIGHT	CURB BATTER	"a" DIMENSION	"b" DIMENSION
A1-6	6"	1 1/2"	T+7 1/2"	T+6 1/2"
A1-8	8"	2"	T+7"	T+6"
B1-6	6"	4"	T+5"	T+4"
TYPE A DIKE	6"	3"	T+6"	T+5"

Height of curb opening will vary with the type of curb and the depth of the local depression.

STATE OF CALIFORNIA  
DEPARTMENT OF TRANSPORTATION

**PRECAST  
DRAINAGE INLETS  
TYPES GO AND GDO**

NO SCALE

RSP D73E DATED APRIL 19, 2019 SUPERSEDES STANDARD PLAN D73E  
DATED MAY 31, 2018 - PAGE 206 OF THE STANDARD PLANS BOOK DATED 2018.

**REVISED STANDARD PLAN RSP D73E**

2018 REVISED STANDARD PLAN RSP D73E