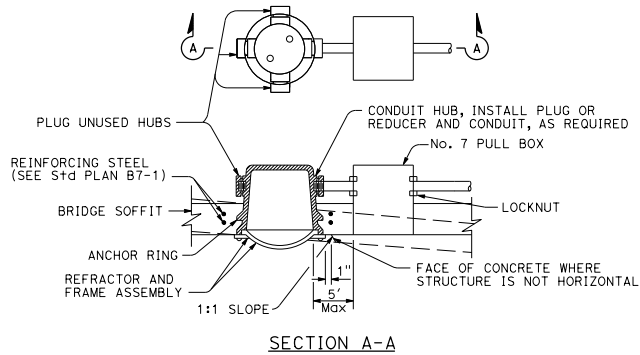
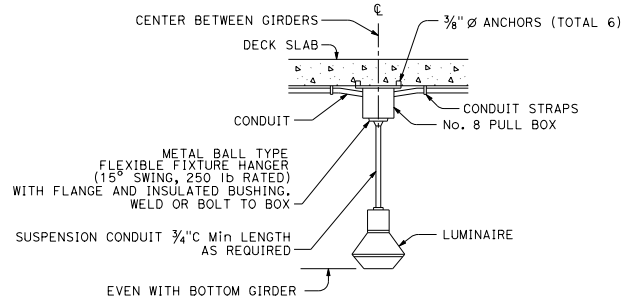


DIST	COUNTY	ROUTE	POST MILES TOTAL PROJECT	SHEET NO.	TOTAL SHEETS

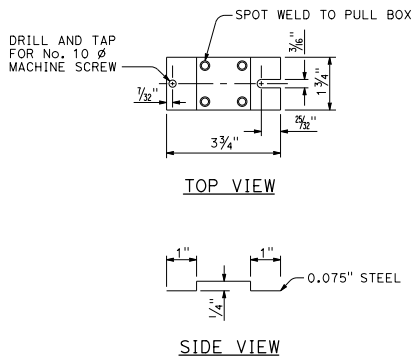
H.R.F.
 REGISTERED ELECTRICAL ENGINEER
 Hamid Zolfaghari
 No. E15636
 April 19, 2019
 PLANS APPROVAL DATE
 EXP. 12-31-19
 THE STATE OF CALIFORNIA OR ITS OFFICERS OR AGENTS SHALL NOT BE RESPONSIBLE FOR THE ACCURACY OR COMPLETENESS OF SCANNED COPIES OF THIS PLAN SHEET.
 STATE OF CALIFORNIA
 PROFESSIONAL ENGINEER
 ELECTRICAL



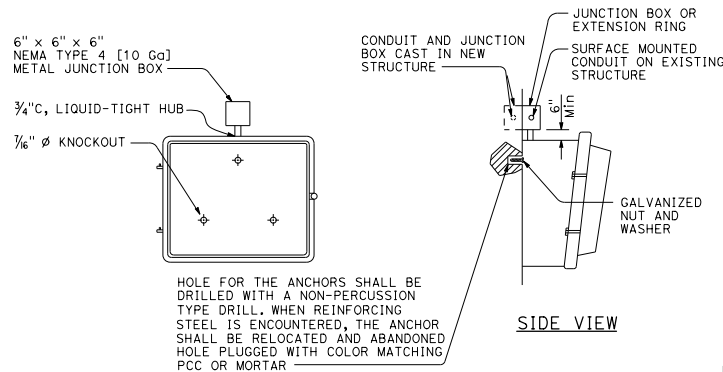
FLUSH-MOUNTED SOFFIT LUMINAIRE INSTALLATION
DETAIL F



PENDANT SOFFIT LUMINAIRE INSTALLATION
DETAIL P



**TERMINAL BLOCK
MOUNTING BRACKET**
DETAIL T



WALL-MOUNTED LUMINAIRE INSTALLATION
DETAIL W

STATE OF CALIFORNIA
DEPARTMENT OF TRANSPORTATION
**ELECTRICAL SYSTEMS
(FLUSH-MOUNTED SOFFIT,
PENDANT SOFFIT
AND WALL-MOUNTED LUMINAIRE
STRUCTURE INSTALLATIONS)**

NO SCALE

RSP ES-9E DATED APRIL 19, 2019 SUPERSEDES RSP ES-9E DATED OCTOBER 19, 2018 AND
STANDARD PLAN ES-9E DATED MAY 31, 2018 - PAGE 539 OF THE STANDARD PLANS BOOK DATED 2018.

REVISED STANDARD PLAN RSP ES-9E

2018 REVISED STANDARD PLAN RSP ES-9E