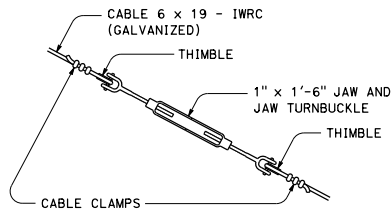
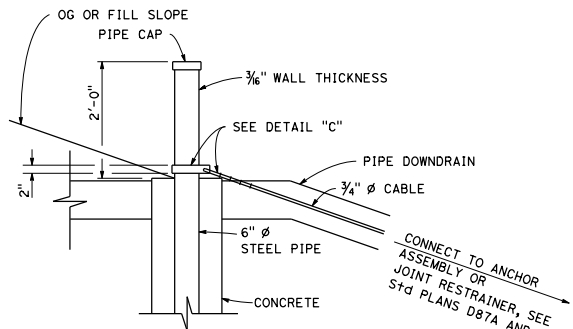


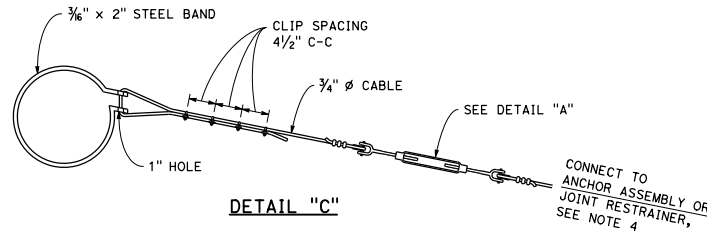
**CABLE ANCHORAGE SYSTEM**



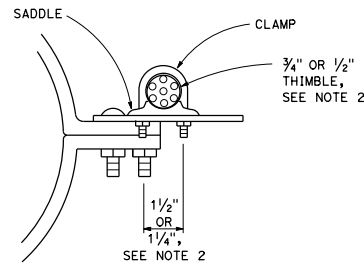
**DETAIL "A"**



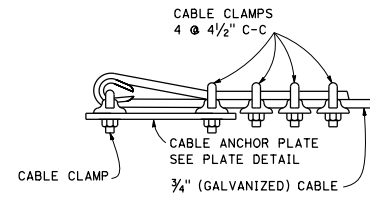
**STEEL PIPE PILE DETAILS FOR CABLE ANCHORAGE SYSTEM**



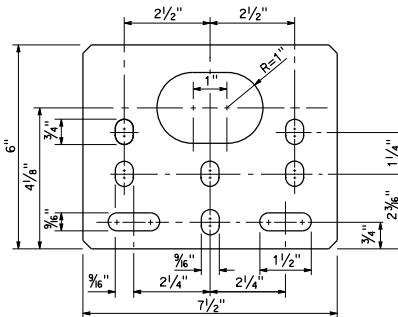
**BAND AND CABLE ASSEMBLY DETAIL FOR CABLE ANCHORAGE SYSTEM**



**END VIEW**



**CABLE ANCHOR TERMINAL DETAIL**



**PLATE DETAIL**

**NOTES:**

1. Diameter of downdrain 24" maximum.
2. 3/4"  $\phi$  cable shown, 1/2"  $\phi$  cable is allowable for pipe downdrain diameters of 8" to 15". Use 1 1/2" dimension for 3/4" cable and 1 1/4" dimension for 1/2" cable.
3. Slip joints not shown.
4. See Standard Plan D87A for Corrugated Metal Pipe Downdrain Anchor Assembly. See Standard Plan D87B for Plastic Pipe Joint Restrainer Assembly.
5. Cable shall not contact soil in finished position. Either adjust position, or replace affected portion of cable with galvanized steel rod of equivalent diameter.

STATE OF CALIFORNIA  
DEPARTMENT OF TRANSPORTATION  
**CABLE ANCHORAGE SYSTEM**

NO SCALE

**D87C**

DIST	COUNTY	ROUTE	POST MILES TOTAL PROJECT	SHEET NO.	TOTAL SHEETS

REGISTERED CIVIL ENGINEER  
 Bruce D. Swanger  
 No. C61257  
 Exp. 6-30-17  
 CIVIL  
 STATE OF CALIFORNIA

October 30, 2015  
 PLANS APPROVAL DATE

THE STATE OF CALIFORNIA OR ITS OFFICERS OR AGENTS SHALL NOT BE RESPONSIBLE FOR THE ACCURACY OR COMPLETENESS OF SCANNED COPIES OF THIS PLAN SHEET.