

DIST	COUNTY	ROUTE	POST MILES TOTAL PROJECT	SHEET NO.	TOTAL SHEETS

REGISTERED CIVIL ENGINEER
 April 20, 2018
 PLANS APPROVAL DATE
 THE STATE OF CALIFORNIA OR ITS OFFICERS OR AGENTS SHALL NOT BE RESPONSIBLE FOR THE ACCURACY OR COMPLETENESS OF SCANNED COPIES OF THIS PLAN SHEET.

LEGEND

- TRAFFIC CONE
- ⊥ TEMPORARY TRAFFIC CONTROL SIGN
- ⬇️ FLASHING ARROW SIGN (FAS)
- ☀️ FAS SUPPORT OR TRAILER
- ☀️ PORTABLE FLASHING BEACON

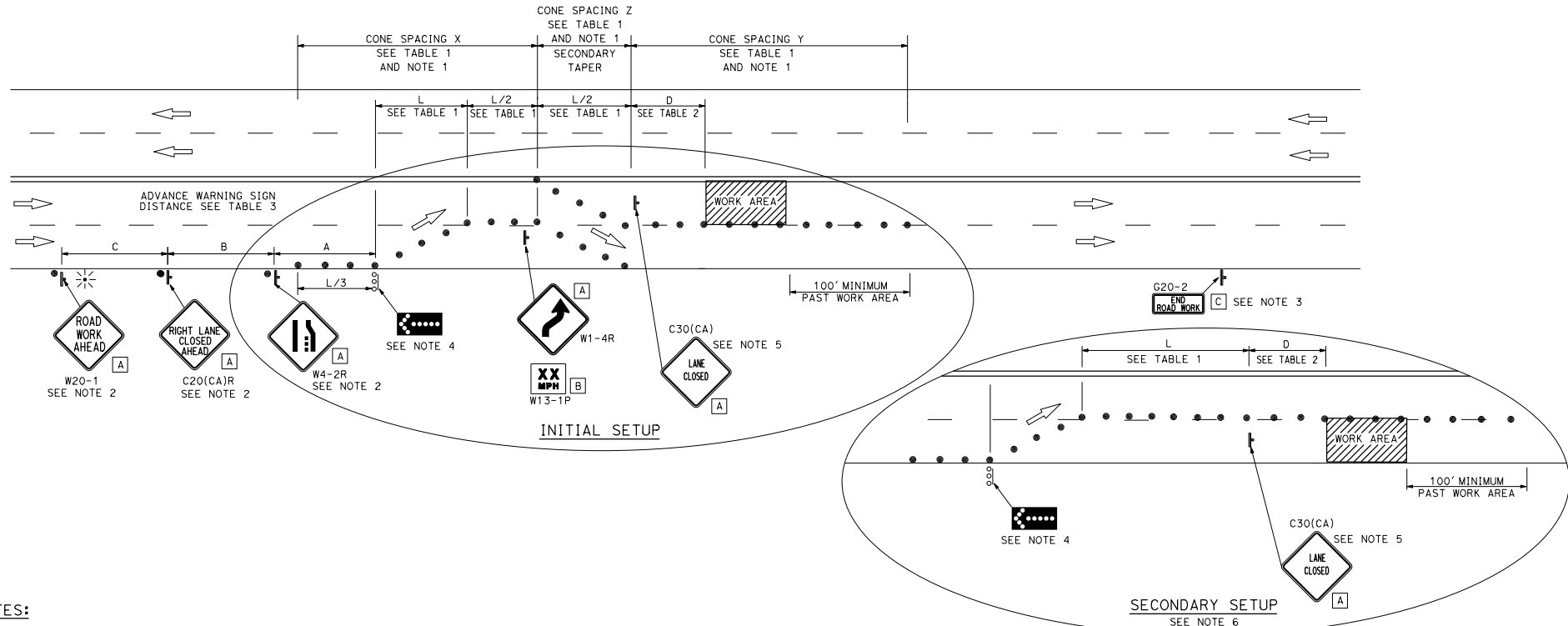
SIGN PANEL SIZE (Min)

- A 48" x 48"
- B 24" x 24"
- C 36" x 18"

NOTES:

- See Revised Standard Plan RSP T9 for tables.
- Use cone spacing X for taper segment, Y for tangent segment or Z for conflict situations, as appropriate, per Table 1, unless X, Y, or Z cone spacing is shown on this sheet.
- Provide at least one person to continuously maintain traffic control devices for lane closures.

TYPICAL CHANGEABLE LANE CLOSURE



NOTES:

1. Portable delineators placed at one-half the spacing indicated for traffic cones may be used instead of cones for daytime closures only.
2. Each advance warning sign shall be equipped with at least two flags for daytime closure. Each flag shall be at least 16" x 16" in size and shall be orange or fluorescent red-orange in color. Flashing beacon shall be placed at the locations indicated for lane closure during hours of darkness.
3. A G20-2 "END ROAD WORK" sign shall be placed at the end of the lane closure unless the end of work area is obvious or ends within the larger project's limits.
4. A minimum 1500' of sight distance shall be provided where possible for vehicles approaching the first flashing arrow sign. Lane closures shall not begin at the top of crest vertical curve or on a horizontal curve.
5. Place C30(CA) "LANE CLOSED" sign at 500' to 1000' intervals throughout extended work area.
6. Relocate secondary taper to tangent location and relocate C30(CA) sign. Remove W1-4R/W13-1P sign package.

STATE OF CALIFORNIA
 DEPARTMENT OF TRANSPORTATION
**TRAFFIC CONTROL SYSTEM
 FOR CHANGEABLE LANE CLOSURE ON
 MULTILANE CONVENTIONAL
 HIGHWAYS AND EXPRESSWAYS**

NO SCALE

RSP T11A DATED APRIL 20, 2018 SUPPLEMENTS THE STANDARD PLANS BOOK DATED 2015.

REVISED STANDARD PLAN RSP T11A

2015 REVISED STANDARD PLAN RSP T11A