

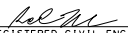
NOTES:

1. Only signs related to pedestrians are shown. For all other signs see appropriate T-sheets.
2. Separate pedestrian walkway from traffic and work zone activities, when temporary walkway is adjacent to traffic.
3. The temporary pedestrian access route must not lead into conflict with vehicles or work.
4. Advance warning sign is not required if the work area is within the limits of a larger work zone. Sign shall be equipped with at least two flags for daytime closure. Each flag shall be orange or fluorescent red-orange in color.
5. All devices used to channelize pedestrian flow must connect such that gaps do not allow pedestrians to stray from the channelized path.
6. Barricades closing sidewalk shall cover the full width of the sidewalk.
7. Separate the temporary pedestrian access route from traffic using a temporary barrier and a crash cushion if necessary.
8. When it is not possible to maintain a minimum of 60 inches throughout the length of the pedestrian route, maintain a minimum width of 48 inches and provide a 60 X 60-inch passing space at least every 200 feet.
9. See Revised Standard Plan RSP A88A for detectable warning surface for curb ramps to apply to temporary curb ramps.
10. See Revised Standard Plan RSP T34 for temporary curb ramp options.

NOTES:

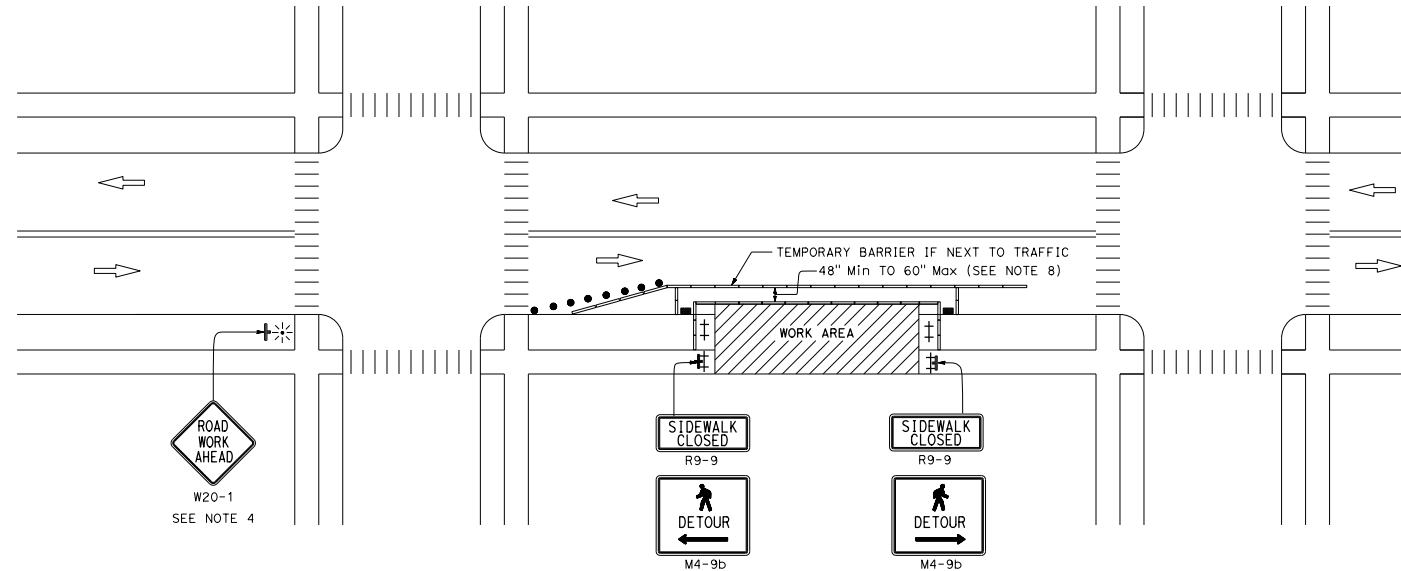
See Revised Standard Plan RSP T9 for tables.
Use cone spacing X for taper segment, Y for tangent segment or Z for conflict situations, as appropriate, per Table 1 unless X, Y, or Z cone spacing is shown on this sheet.

Dist	COUNTY	ROUTE	POST MILES TOTAL PROJECT	SHEET NO.	TOTAL SHEETS


 REGISTERED CIVIL ENGINEER
 No. C68559
 Exp. 9-30-17
 CIVIL
 STATE OF CALIFORNIA

July 21, 2017
 PLANS APPROVAL DATE
THE STATE OF CALIFORNIA OR ITS OFFICERS OR AGENTS SHALL NOT BE RESPONSIBLE FOR THE ACCURACY OR COMPLETENESS OF SCANNED COPIES OF THIS PLAN SHEET.

TO ACCOMPANY PLANS DATED _____



LEGEND:

- ⊥ BARRICADE
- TEMPORARY CURB RAMP
- ▬ CHANNELIZING DEVICE
- TRAFFIC CONE
- ⊛ PORTABLE FLASHING BEACON
- ⊥ TEMPORARY TRAFFIC CONTROL SIGN
- ⊥ TEMPORARY TRAFFIC CONTROL SIGN ON BARRICADE

SIGN PANEL SIZE (Min)

SIGN DESIGNATION	SIGN OR PLAQUE	SIGN SIZE
M4-9b	PEDESTRIAN DETOUR	30" x 24"
R9-9	SIDEWALK CLOSED	24" x 12"
W20-1	ROAD WORK AHEAD	36" x 36"

STATE OF CALIFORNIA
DEPARTMENT OF TRANSPORTATION

**TEMPORARY PEDESTRIAN ACCESS ROUTES
TYPICAL SIDEWALK DIVERSION WITHIN ROADBED**

NO SCALE

RSP T31 DATED JULY 21, 2017 SUPPLEMENTS THE STANDARD PLANS BOOK DATED 2015.

REVISED STANDARD PLAN RSP T31

2015 REVISED STANDARD PLAN RSP T31