

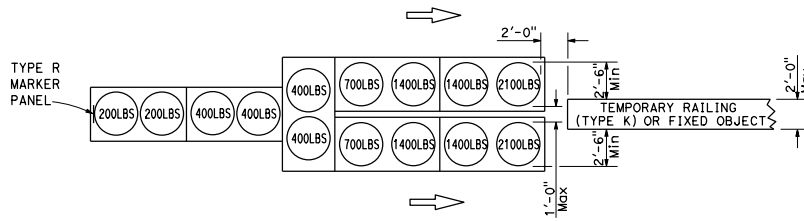
Dist#	COUNTY	ROUTE	POST MILES TOTAL PROJECT	SHEET NO.	TOTAL SHEETS

**Randell D. Hiatt**  
REGISTERED CIVIL ENGINEER

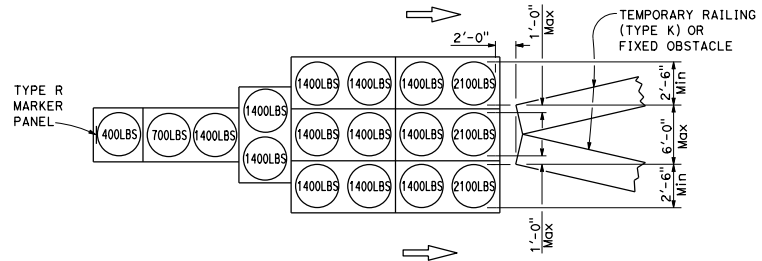
October 30, 2015  
PLANS APPROVAL DATE

**Randell D. Hiatt**  
REGISTERED PROFESSIONAL ENGINEER  
No. C50200  
Exp. 6-30-17  
CIVIL  
STATE OF CALIFORNIA

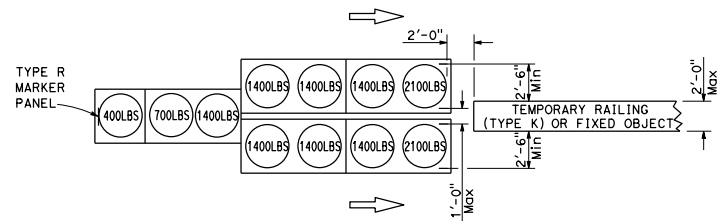
THE STATE OF CALIFORNIA OR ITS OFFICERS OR AGENTS SHALL NOT BE RESPONSIBLE FOR THE ACCURACY OR COMPLETENESS OF SCANNED COPIES OF THIS PLAN SHEET.



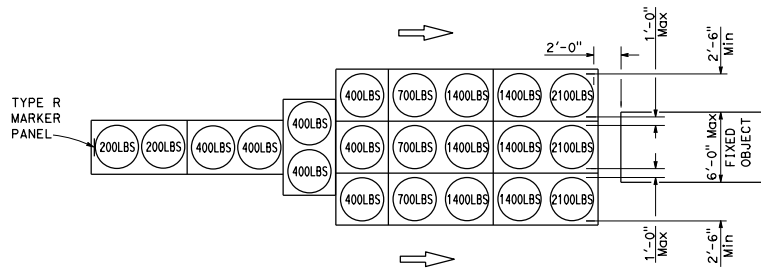
**ARRAY 'TU14'**  
Approach speed 45 mph or more



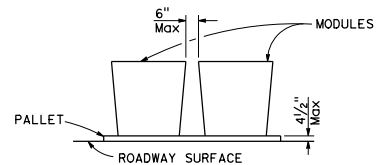
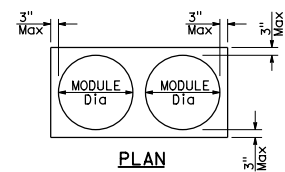
**ARRAY 'TU17'**  
Approach speed less than 45 mph



**ARRAY 'TU11'**  
Approach speed less than 45 mph



**ARRAY 'TU21'**  
Approach speed 45 mph or more



**CRASH CUSHION PALLET DETAIL**

**NOTES:**

1. (XXX) Indicates sand filled module location and weight of sand in pounds for each module. Module spacing is based on the greater diameter of the module.
2. All sand weights are nominal.
3. Refer to Standard Plan A73B for marker details.
4. Approach speeds indicated conform to NCHRP 350 Report criteria.

STATE OF CALIFORNIA  
DEPARTMENT OF TRANSPORTATION

**TEMPORARY CRASH CUSHION,  
SAND FILLED  
(UNIDIRECTIONAL)**

NO SCALE

**T1A**