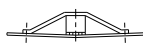


SECTION B-B

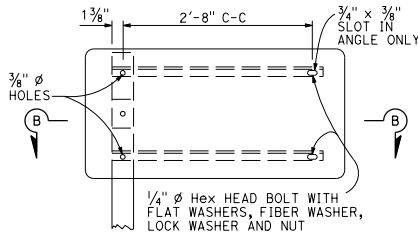
SEE BACK BRACE DETAILS AND NOTE 2



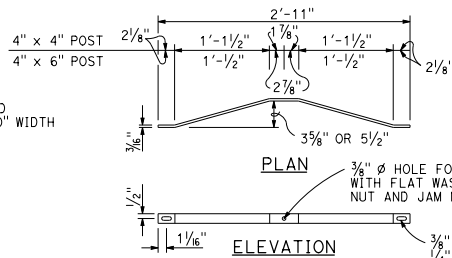
SECTION C-C



SECTION D-D



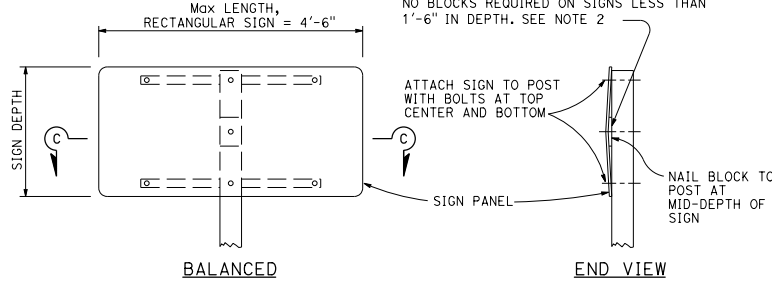
UNBALANCED



BACK BRACE DETAILS

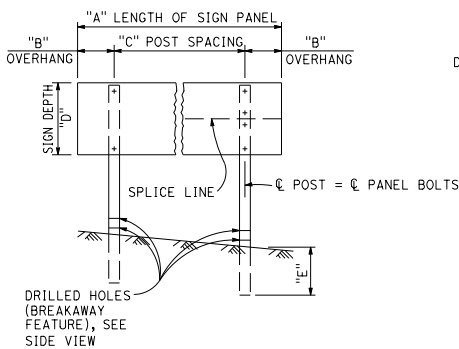
See Note 2

WOOD BLOCK SPACER -
 3/4" x 4" x 6" FOR
 2'-0" - 3'-0" WIDTH SIGNS
 1 1/2" x 4" x 6" FOR
 3'-1" - 4'-6" WIDTH SIGNS
 NO BLOCKS REQUIRED ON SIGNS LESS THAN
 1'-6" IN DEPTH. SEE NOTE 2



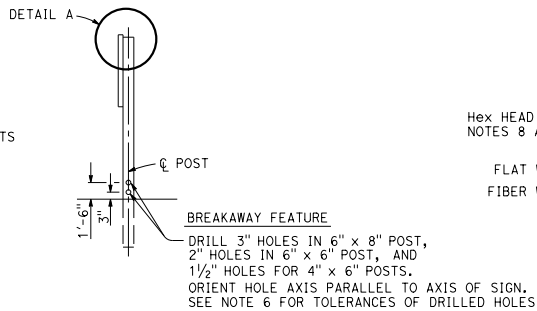
SINGLE POST INSTALLATION

See Note 5 regarding breakaway feature for single post installations.



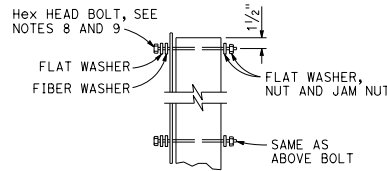
ELEVATION

See Note 7



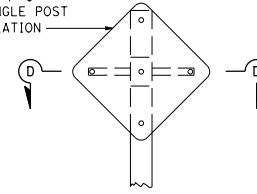
SIDE VIEW

TWO POST INSTALLATION

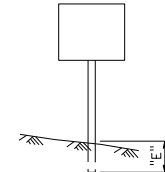


DETAIL A

Max DIAMOND SIGN =
 4'-0" x 4'-0"
 FOR SINGLE POST
 INSTALLATION



BALANCED



"E" Post Embedment

POST SIZE	"E"
4" x 4"	3.5'
4" x 6"	4.5'
6" x 6"	5.0'
6" x 8"	6.0'

NOTES:

- Place long dimension of post cross section normal to sign axis. See Section C-C.
- Balanced single post installations of unframed single sheet aluminum panel signs shall have block spacers if 1'-6" or more in depth and a combination of block spacers and back braces if 1'-6" or more in depth and 2'-10" or more in width. Sign panels less than 1'-6" in depth and 2'-10" or more in width shall have back braces only.
- For post size see sign layout, format or quantity sheets.
- Balanced single post installations of Laminated Panel and Framed single sheet panel signs require back braces when 2'-10" or more in length.
- Breakaway feature for single post installation shall be the same as the breakaway feature shown for the two post installation.
- Tolerance for diameter of drilled holes in breakaway feature is ±1/8".
- Bolt hole layout is dependent on type of panel.
- Drill holes in post to match panel.
- 5/8" diameter for single sheet aluminum panel signs.
- 3/8" diameter for laminated panel signs or framed single sheet aluminum panel signs.

STATE OF CALIFORNIA
 DEPARTMENT OF TRANSPORTATION
**ROADSIDE SIGNS
 WOOD POST
 TYPICAL INSTALLATION
 DETAILS No. 2**

NO SCALE

RS2

DIST	COUNTY	ROUTE	POST MILES TOTAL PROJECT	SHEET NO.	TOTAL SHEETS

Stanley P. Johnson
 REGISTERED CIVIL ENGINEER
 No. C67393
 Exp. 3-31-20
 CIVIL
 STATE OF CALIFORNIA

May 31, 2018
 PLANS APPROVAL DATE

THE STATE OF CALIFORNIA OR ITS OFFICERS OR AGENTS SHALL NOT BE RESPONSIBLE FOR THE ACCURACY OR COMPLETENESS OF SCANNED COPIES OF THIS PLAN SHEET.

POST SPACING TABLE		
SIGN PANEL LENGTH	SIGN PANEL OVERHANG	POST SPACING
"A"	"B"	"C"
4'-6"	6"	3'-6"
4'-8" TO 5'-6"	7" TO 1'-0"	3'-6"
6'-0" & 6'-6"	1'-0" & 1'-3"	4'-0"
7'-0" & 7'-6"	1'-3" & 1'-6"	4'-6"
8'-0"	1'-6"	5'-0"
8'-6"	1'-8"	5'-2"
9'-0"	1'-10"	5'-4"
9'-6"	1'-11"	5'-8"
10'-0"	2'-0"	6'-0"
10'-6"	2'-0"	6'-6"
11'-0", 11'-6", 12'-0"	2'-0", 2'-3", 2'-6"	7'-0"
12'-6"	2'-6"	7'-6"
13'-0"	2'-6"	8'-0"
13'-6", 14'-6"	2'-6", 3'-0"	8'-6"
14'-0", 15'-0"	2'-6", 3'-0"	9'-0"
15'-6", 16'-0"	3'-0", 3'-3"	9'-6"
16'-6"	3'-3"	10'-0"
17'-0", 17'-6"	3'-3", 3'-6"	10'-6"
18'-0", 18'-6"	3'-6", 3'-9"	11'-0"
19'-0"	3'-9"	11'-6"
19'-6", 20'-0"	3'-9", 4'-0"	12'-0"
20'-6", 21'-0"	4'-0", 4'-3"	12'-6"
21'-6"	4'-3"	13'-0"
22'-0", 22'-6"	4'-3", 4'-6"	13'-6"
23'-0"	4'-6"	14'-0"
23'-6", 24'-0"	4'-6", 4'-9"	14'-6"