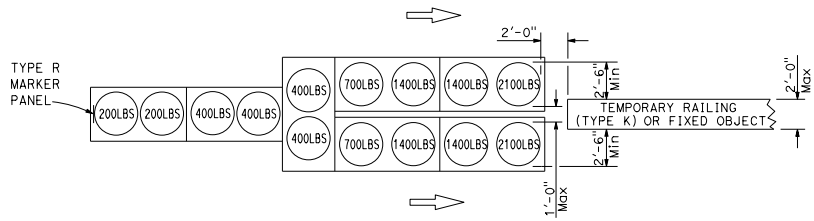
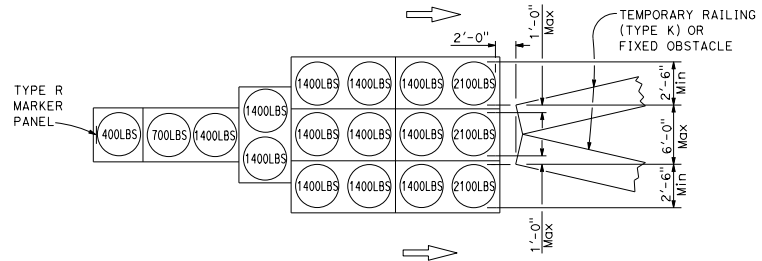


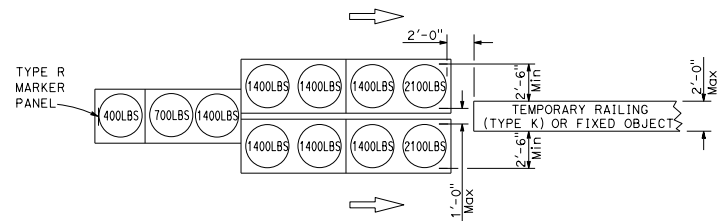
Dist	COUNTY	ROUTE	POST MILES TOTAL PROJECT	SHEET NO.	TOTAL SHEETS
<i>Randell D. Hiatt</i> REGISTERED CIVIL ENGINEER					
May 31, 2018 PLANS APPROVAL DATE					
<i>Randell D. Hiatt</i> REGISTERED PROFESSIONAL ENGINEER No. C60200 Exp. 6-30-19 CIVIL STATE OF CALIFORNIA					
THE STATE OF CALIFORNIA OR ITS OFFICERS OR AGENTS SHALL NOT BE RESPONSIBLE FOR THE ACCURACY OR COMPLETENESS OF SCANNED COPIES OF THIS PLAN SHEET.					



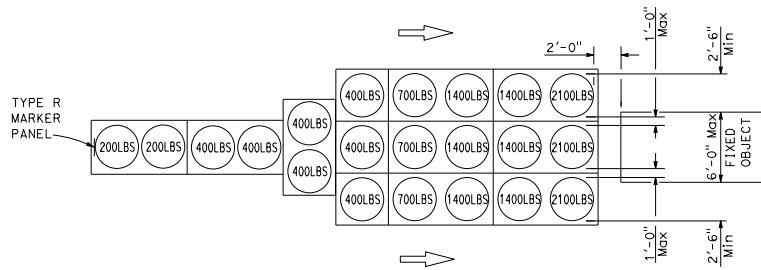
ARRAY 'TU14'
Approach speed 45 mph or more



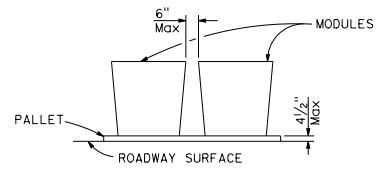
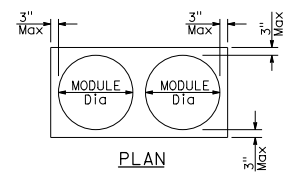
ARRAY 'TU17'
Approach speed less than 45 mph



ARRAY 'TU11'
Approach speed less than 45 mph



ARRAY 'TU21'
Approach speed 45 mph or more



CRASH CUSHION PALLET DETAIL

NOTES:

1. (XXX) Indicates sand filled module location and weight of sand in pounds for each module. Module spacing is based on the greater diameter of the module.
2. All sand weights are nominal.
3. Refer to Standard Plan A73B for marker details.
4. Approach speeds indicated conform to NCHRP 350 Report criteria.

STATE OF CALIFORNIA
 DEPARTMENT OF TRANSPORTATION
**TEMPORARY CRASH CUSHION,
 SAND FILLED
 (UNIDIRECTIONAL)**
 NO SCALE