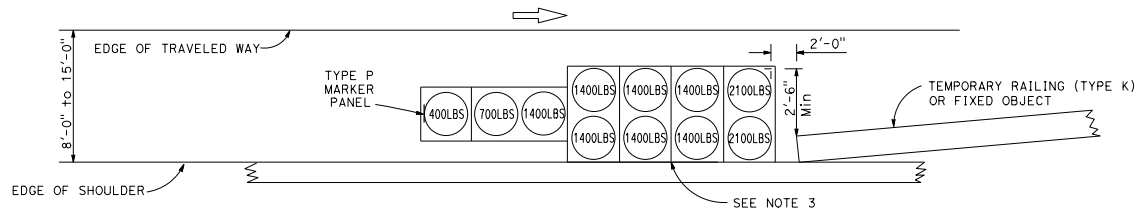
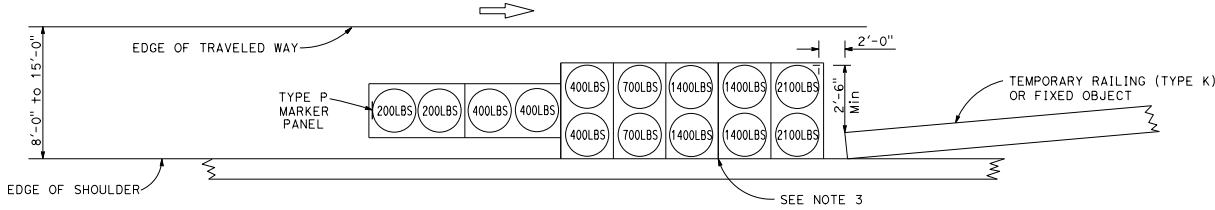


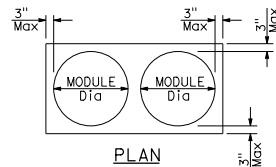
Dist	COUNTY	ROUTE	POST MILES TOTAL PROJECT	SHEET NO.	TOTAL SHEETS
<i>Randell D. Hiatt</i> REGISTERED CIVIL ENGINEER					
May 31, 2018 PLANS APPROVAL DATE					
No. C50200 THE STATE OF CALIFORNIA OR ITS OFFICERS OR AGENTS SHALL NOT BE RESPONSIBLE FOR THE ACCURACY OR COMPLETENESS OF SCANNED COPIES OF THIS PLAN SHEET.					



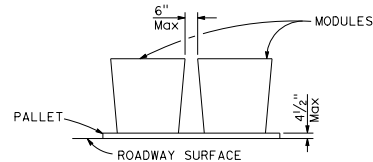
ARRAY 'TS11'
 Approach speed less than 45 mph
 See Note 6



ARRAY 'TS14'
 Approach speed 45 mph or more
 See Note 6



PLAN



ELEVATION

CRASH CUSHION PALLET DETAIL

NOTES:

- (XXX) Indicates sand filled module location and weight of sand in pounds for each module. Module spacing is based on the greater diameter of the module.
- All sand weights are nominal.
- The temporary crash cushion arrays shown on this plan shall be used only in locations where there will be traffic on one side of the temporary crash cushion array.
- Arrays for median shoulders shall conform to details shown on this plan for outside shoulders.
- Refer to Standard Plan A73B for marker details.
- For shoulder widths less than 8'-0", appropriate approved crash cushion protection, other than sand filled modules, shall be provided at fixed objects and at approach ends of temporary railing. The specific type of crash cushion shall be as shown on the project plans or as specified in the Special Provisions, or if not shown on the project plans or specified in the Special Provisions, shall be as approved by the Engineer.
- Approach speeds indicated conform to NCHRP 350 Report criteria.

STATE OF CALIFORNIA
 DEPARTMENT OF TRANSPORTATION
**TEMPORARY CRASH CUSHION,
 SAND FILLED
 (SHOULDER INSTALLATIONS)**

NO SCALE

T2