

LEGEND

- TRAFFIC CONE
- ⊢ TEMPORARY TRAFFIC CONTROL SIGN
- ⬢⬢⬢⬢ FLASHING ARROW SIGN (FAS)
- ☀ FAS SUPPORT OR TRAILER
- ☀ PORTABLE FLASHING BEACON

SIGN PANEL SIZE (Min)

- A 48" x 48"
- B 24" x 24"
- C 36" x 18"

NOTES:

See Standard Plan T9 for tables.
 Use cone spacing X for taper segment, Y for tangent segment or Z for conflict situations, as appropriate, per Table 1, unless X, Y, or Z cone spacing is shown on this sheet.
 Provide at least one person to continuously maintain traffic control devices for lane closures.

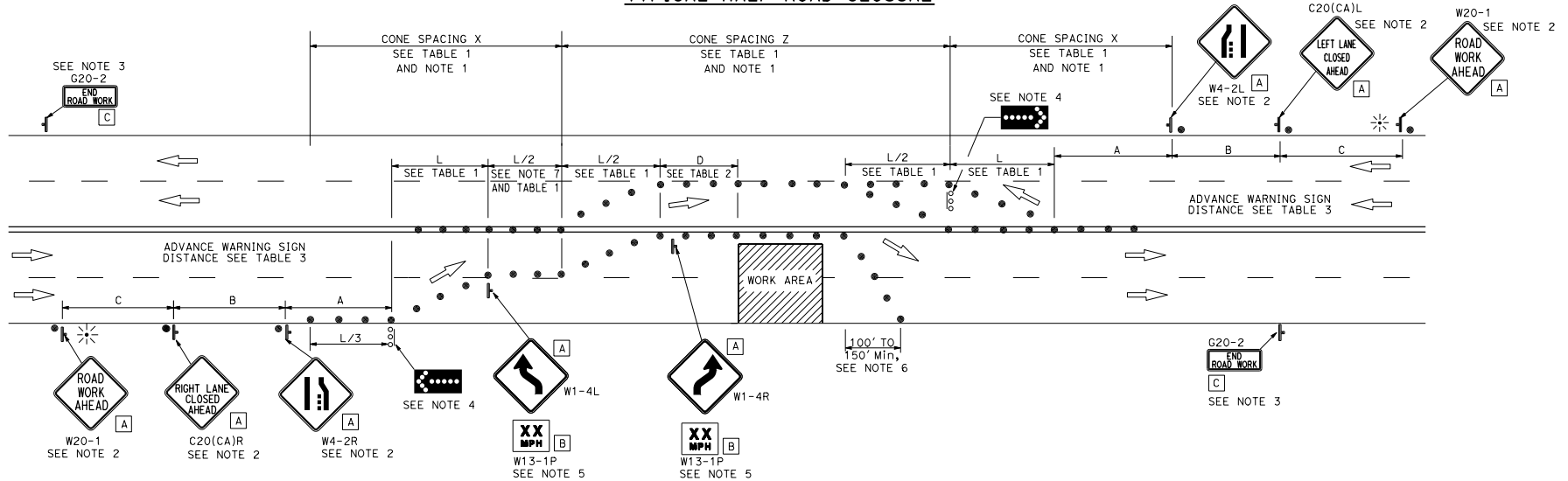
DIST	COUNTY	ROUTE	POST MILES TOTAL PROJECT	SHEET NO.	TOTAL SHEETS

Atifa Ferouz
 REGISTERED CIVIL ENGINEER
 No. C80402
 Exp. 3-31-19
 CIVIL
 STATE OF CALIFORNIA

May 31, 2018
 PLANS APPROVAL DATE

THE STATE OF CALIFORNIA OR ITS OFFICERS OR AGENTS SHALL NOT BE RESPONSIBLE FOR THE ACCURACY OR COMPLETENESS OF SCANNED COPIES OF THIS PLAN SHEET.

TYPICAL HALF ROAD CLOSURE



NOTES:

- Portable delineators placed at one-half the spacing indicated for traffic cones may be used instead of cones for daytime closures only.
- Each advance warning sign shall be equipped with at least two flags for daytime closure. Each flag shall be at least 16" x 16" in size and shall be orange or fluorescent red-orange in color. Flashing beacons shall be placed at the locations indicated for lane closure during hours of darkness.
- A G20-2 "END ROAD WORK" sign, shall be placed at the end of the lane closure unless the end of work area is obvious or ends within the larger project's limits.
- A minimum 1500' sight distance shall be provided where possible for vehicles approaching the first flashing arrow sign. Lane closures shall not begin at the top of crest vertical curve or on a horizontal curve.
- Advisory speed will be determined by the Engineer, The W13-1P Plaque will not be required when advisory speed is more than the posted or maximum speed limit.
- Length may be reduced by the Engineer to address site conditions.
- The tangent (L/2) shall be used.

STATE OF CALIFORNIA
 DEPARTMENT OF TRANSPORTATION

**TRAFFIC CONTROL SYSTEM
 FOR HALF ROAD CLOSURE ON
 MULTILANE CONVENTIONAL
 HIGHWAYS AND EXPRESSWAYS**

NO SCALE