

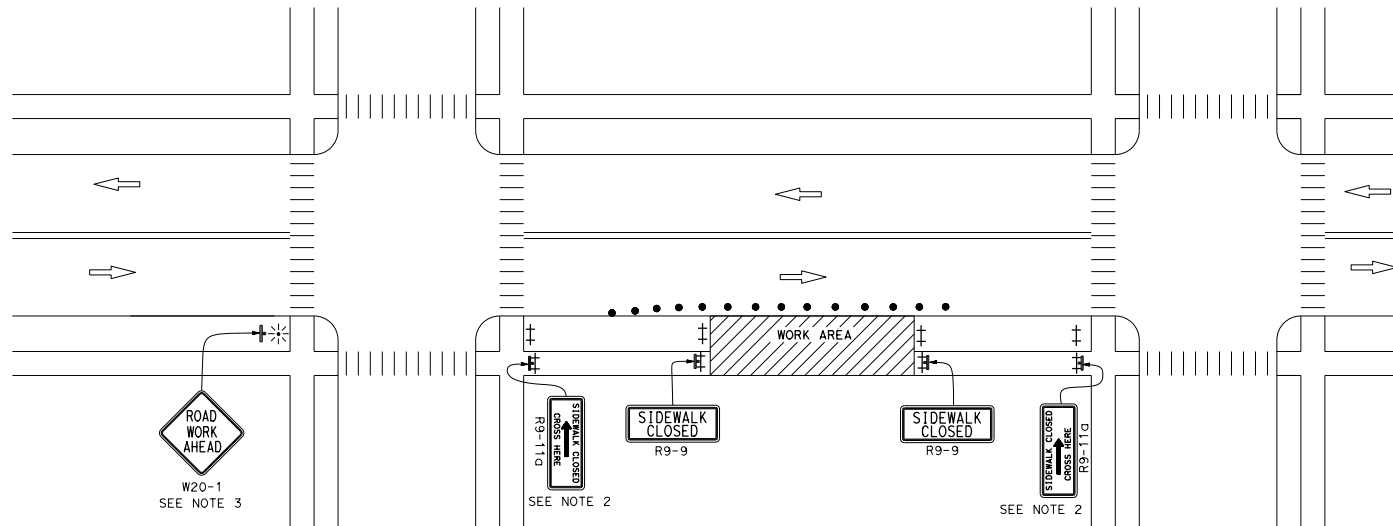
**NOTES:**

1. Only signs related to pedestrians are shown. For all other signs see appropriate T-sheets.
2. Barricades closing sidewalk shall cover the full width of the sidewalk. Use R9-11 sign when there are destination points between the detour and the work area. Locate the R9-11 sign to allow pedestrian access.
3. Advance warning sign is not required if the work area is within the limits of a larger work zone. Sign shall be equipped with at least two flags for daytime closure. Each flag shall be be orange or fluorescent red-orange in color.

**NOTES:**

See Standard Plan T9 for tables.  
 Use cone spacing X for taper segment, Y for tangent segment or Z for conflict situations, as appropriate, per Table 1 unless X,Y, or Z cone spacing is shown on this sheet.

Dist	COUNTY	ROUTE	POST MILES TOTAL PROJECT	SHEET NO.	TOTAL SHEETS
Atifa Ferouz REGISTERED CIVIL ENGINEER No. C80402 EXP. 3-31-19 CIVIL STATE OF CALIFORNIA					
May 31, 2018 PLANS APPROVAL DATE THE STATE OF CALIFORNIA OR ITS OFFICERS OR AGENTS SHALL NOT BE RESPONSIBLE FOR THE ACCURACY OR COMPLETENESS OF SCANNED COPIES OF THIS PLAN SHEET.					



**LEGEND:**

- ⊥ BARRICADE
- TRAFFIC CONE
- ⚡ PORTABLE FLASHING BEACON
- ⊥ SIGN
- ⊥ TEMPORARY TRAFFIC CONTROL SIGN ON BARRICADE

**SIGN PANEL SIZE (Min)**

SIGN DESIGNATION	SIGN OR PLAQUE	SIGN SIZE
R9-9	SIDEWALK CLOSED	24" x 12"
R9-11	SIDEWALK CLOSED AHEAD CROSS HERE	24" x 18"
R9-11a	SIDEWALK CLOSED CROSS HERE	24" x 12"
W20-1	ROAD WORK AHEAD	36" x 36"

STATE OF CALIFORNIA  
 DEPARTMENT OF TRANSPORTATION  
**TEMPORARY PEDESTRIAN ACCESS ROUTES  
 TYPICAL SIDEWALK CLOSURE  
 AND PEDESTRIAN DETOUR**

NO SCALE

**T30**