

**NOTES:**

1. Only signs related to pedestrians are shown. For all other signs see appropriate T-sheets.
2. Separate pedestrian walkway from traffic and work zone activities, when temporary walkway is adjacent to traffic.
3. The temporary pedestrian access route must not lead into conflict with vehicles or work.
4. Advance warning sign is not required if the work area is within the limits of a larger work zone. Sign shall be equipped with at least two flags for daytime closure. Each flag shall be orange or fluorescent red-orange in color.
5. All devices used to channelize pedestrian flow must connect such that gaps do not allow pedestrians to stray from the channelized path.
6. Barricades closing sidewalk shall cover the full width of the sidewalk.
7. Separate the temporary pedestrian access route from traffic using a temporary barrier and a crash cushion if necessary.
8. When it is not possible to maintain a minimum of 60 inches throughout the length of the pedestrian route, maintain a minimum width of 48 inches and provide a 60 X 60-inch passing space at least every 200 feet.
9. See Standard Plan A88A for detectable warning surface for curb ramps to apply to temporary curb ramps.
10. See Standard Plan T34 for temporary curb ramp options.

**NOTES:**

See Standard Plan T9 for tables.  
 Use cone spacing X for taper segment, Y for tangent segment or Z for conflict situations, as appropriate, per Table 1 unless X, Y, or Z cone spacing is shown on this sheet.

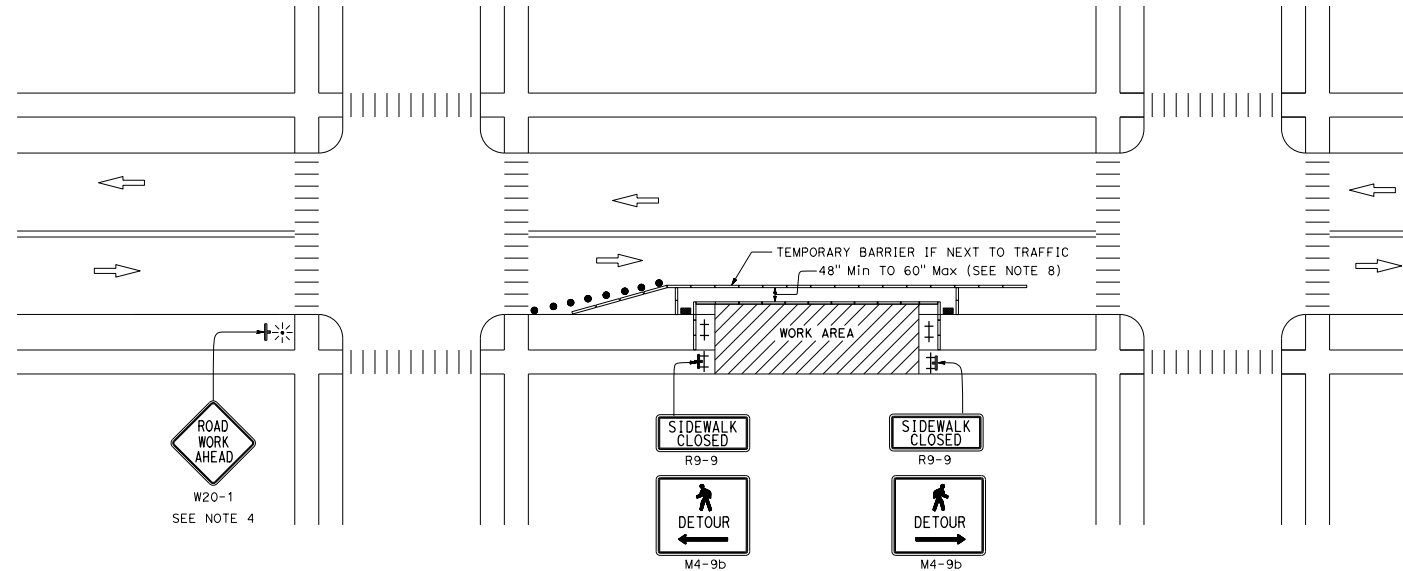
Dist	COUNTY	ROUTE	POST MILES TOTAL PROJECT	SHEET NO.	TOTAL SHEETS

Atifa Ferouz  
 REGISTERED CIVIL ENGINEER

May 31, 2018  
 PLANS APPROVAL DATE

Atifa Ferouz  
 No. C80402  
 Exp. 3-31-19  
 CIVIL  
 STATE OF CALIFORNIA

THE STATE OF CALIFORNIA OR ITS OFFICERS OR AGENTS SHALL NOT BE RESPONSIBLE FOR THE ACCURACY OR COMPLETENESS OF SCANNED COPIES OF THIS PLAN SHEET.



**LEGEND:**

- ⊥ BARRICADE
- TEMPORARY CURB RAMP
- ▬ CHANNELIZING DEVICE
- TRAFFIC CONE
- ⊛ PORTABLE FLASHING BEACON
- ⊥ TEMPORARY TRAFFIC CONTROL SIGN
- ⊥ TEMPORARY TRAFFIC CONTROL SIGN ON BARRICADE

**SIGN PANEL SIZE (Min)**

SIGN DESIGNATION	SIGN OR PLAQUE	SIGN SIZE
M4-9b	PEDESTRIAN DETOUR	30" x 24"
R9-9	SIDEWALK CLOSED	24" x 12"
W20-1	ROAD WORK AHEAD	36" x 36"

STATE OF CALIFORNIA  
 DEPARTMENT OF TRANSPORTATION

**TEMPORARY PEDESTRIAN ACCESS ROUTES  
 TYPICAL SIDEWALK DIVERSION WITHIN ROADBED**

NO SCALE

**T31**