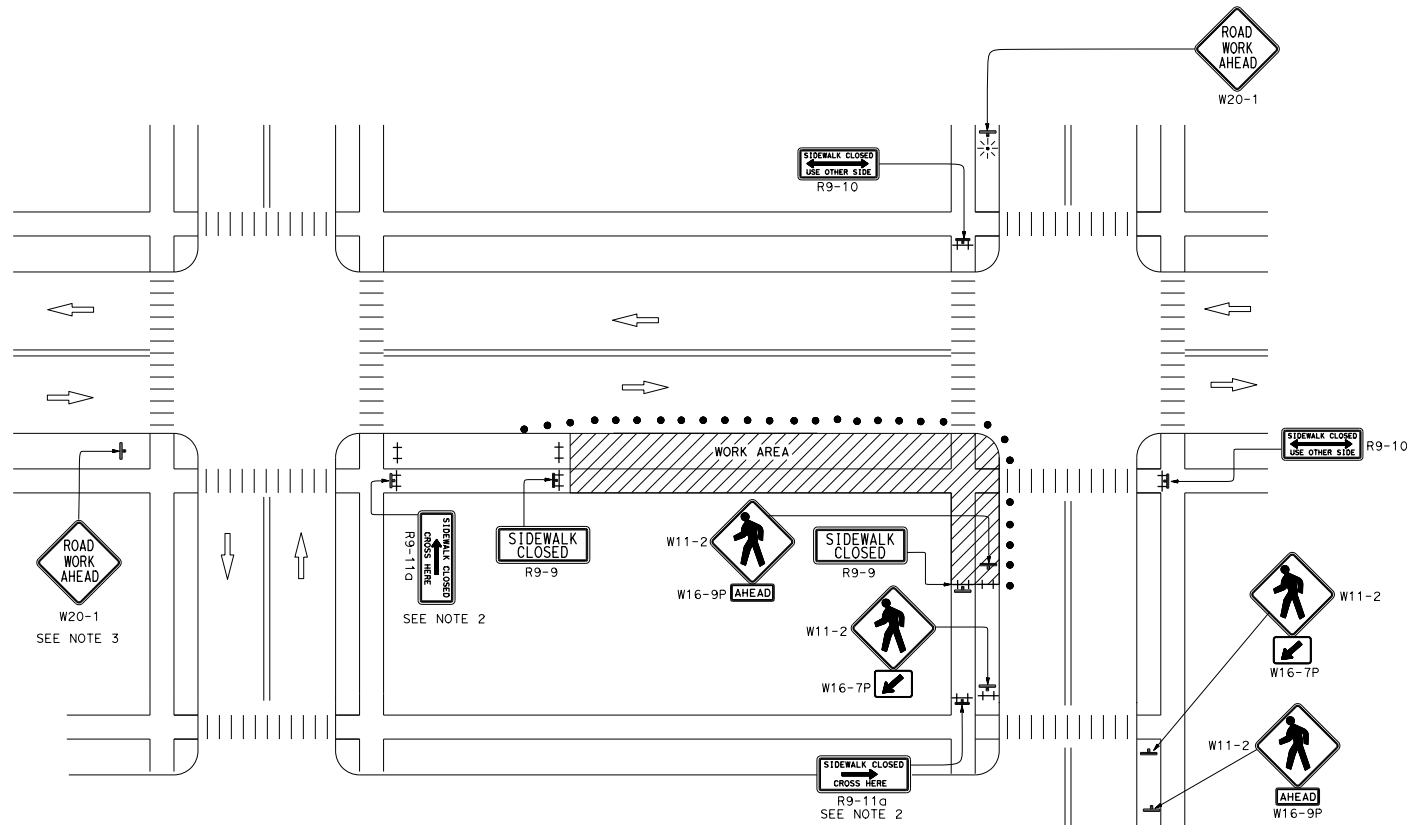


**NOTES:**

1. Only signs related to pedestrians are shown. For all other signs see appropriate T-sheets.
2. Barricades closing sidewalk shall cover the full width of the sidewalk and the work area. Use R9-11 sign when there are destination points between the detour and the work area. Locate the R9-11 sign to allow pedestrian access.
3. Advance warning sign is not required if the work area is within the limits of a larger work zone. Sign shall be equipped with at least two flags for daytime closure. Each flag shall be orange or fluorescent red-orange in color.

**NOTES:**

See Standard Plan T9 for tables.  
 Use cone spacing X for taper segment, Y for tangent segment or Z for conflict situations, as appropriate, per Table 1 unless X, Y, or Z cone spacing is shown on this sheet.



Dist	COUNTY	ROUTE	POST MILES TOTAL PROJECT	SHEET NO.	TOTAL SHEETS

*Atifa Ferouz*  
 REGISTERED CIVIL ENGINEER

May 31, 2018  
 PLANS APPROVAL DATE

Atifa Ferouz  
 No. C80402  
 Exp. 3-31-19  
 CIVIL  
 STATE OF CALIFORNIA

THE STATE OF CALIFORNIA OR ITS OFFICERS OR AGENTS SHALL NOT BE RESPONSIBLE FOR THE ACCURACY OR COMPLETENESS OF SCANNED COPIES OF THIS PLAN SHEET.

**LEGEND:**

- † BARRICADE
- TRAFFIC CONE
- ⊛ PORTABLE FLASHING BEACON
- ⊥ TEMPORARY TRAFFIC CONTROL SIGN
- ⊥ TEMPORARY TRAFFIC CONTROL SIGN ON BARRICADE

**SIGN PANEL SIZE (Min)**

SIGN DESIGNATION	SIGN OR PLAQUE	SIGN SIZE
R9-9	SIDEWALK CLOSED	24" x 12"
R9-10	SIDEWALK CLOSED USE OTHER SIDE	24" x 12"
R9-11	SIDEWALK CLOSED AHEAD CROSS HERE	24" x 18"
R9-11a	SIDEWALK CLOSED CROSS HERE	24" x 12"
W11-2	PEDESTRIAN	36" x 36"
W16-7P	DIAGONAL DOWNWARD POINTING ARROW (PLAQUE)	24" x 12"
W16-9P	AHEAD (PLAQUE)	24" x 12"
W20-1	ROAD WORK AHEAD	36" x 36"

STATE OF CALIFORNIA  
 DEPARTMENT OF TRANSPORTATION  
**TEMPORARY PEDESTRIAN ACCESS ROUTES  
 TYPICAL SIDEWALK/CROSSWALK CLOSURE  
 AND PEDESTRIAN DETOUR**

NO SCALE

**T 32**